

# **RACE WEEK PNW Anacortes**

## **June 21-25, 2021**

### **Sailing Instructions**

#### **1. CHANGES TO SAILING INSTRUCTIONS**

Any change to the sailing instructions (SIs) will be posted before 0900 hours on the day it will take effect, except that any change to the schedule of races will be posted by 1800 hours on the day before it will take effect.

#### **2. COMMUNICATIONS WITH COMPETITORS**

- 2.1 Notices to competitors, other than those related to hearings, will be posted on the official notice board located on "C" Dock near Slip #1 at the Cap Sante Marina. Results will be posted online, as well as on the official notice board.
- 2.2 Notices related to hearings will be posted at the jury desk located downstairs in the Anacortes Yacht Club. They may be posted online at [www.RacingRulesofSailing.org/events/2075/event\\_links](https://www.RacingRulesofSailing.org/events/2075/event_links)
- 2.3 The notice of race (NOR), SIs, and amendments thereto will also be posted online at the Race Week registration documents page at: [https://yachtscoring.com/event\\_documents.cfm?eid=14265](https://yachtscoring.com/event_documents.cfm?eid=14265).
- 2.4 The race committee (RC) may use VHF USA channel 72 to communicate information about the races.
- 2.5 The RC will attempt to hail boats observed OCS at the start. The failure of any boat to hear the hail, the hail of some but not all OCS boats, the untimely hail of some or all OCS boats, or failure to hail any or all boats shall not be grounds for redress. This changes Racing Rule of Sailing (RRS) 62.
- 2.6 Except in an emergency, or when retiring from a race, a boat that is racing shall not make voice or data transmissions and shall not receive voice or data communication that is not available to all boats.

#### **3. SIGNALS MADE ASHORE**

No signals will be made ashore. All signals will be made from the RC signal vessel. When at port, the RC signal vessel will be berthed at Slip #5 on "C" Dock at Cap Sante Marina.

#### **4. DAILY CHECK-IN**

- 4.1 All boats must check-in with the RC signal vessel before the start of each day's racing. The RC will acknowledge a check-in with the boat's name and/or sail number. It is the responsibility of each boat to ensure that the RC acknowledges her check-in.
- 4.2 All boats shall check-in by sailing ON STARBOARD TACK past the stern of the RC signal vessel and hailing her class and sail number. Or, boats can check-in by hailing the RC on VHF Channel 72 with her class and sail number. After the first warning signal, boats may only check in on Channel 72.

#### **5. CLASS FLAGS & SAIL NUMBERS**

- 5.1 Class assignments will be made by the OA and competitors will race with their assigned fleet. The class assignments will be posted on the official notice board on June 20, 2021. Any changes to the class assignments will be posted no later than 0900 on June 21, 2021 and Signal Flag 'L' will be displayed (as defined in 4.1).
- 5.2 The classes will each have an alpha designation (A, C, D, etc.) and class flags will be the alpha flags as defined in the International Code Flags.
- 5.3 Notice of any errors in handicap ratings or other errors in registration information must be brought to the attention of the Race Committee, in writing, before 1000 on the day following the day that the error was originally posted. Races may or may not be rescored, at the discretion of the RC, if any changes are brought to its attention outside of this time limit.
- 5.4 Competitors will comply with RRS Appendix G Identification on Sails. A competitor who is not in compliance may be issued a written warning by the OA and the RC. If this warning is ignored, the competitor may receive a 20% scoring penalty calculated as state in RRS 44.3(c) without a hearing. This changes RRS 63.1 and RRS A5.
- 5.5 If a boat races with sail numbers that are different from the sail numbers provided at the time of registration, she must request the approval of the RC in writing, stating her class, boat name, all registered sail numbers and alternate sail numbers prior to the start of the race. The RC may reject any requested alternate sail numbers that duplicate another registered boat. A boat that fails to comply with this instruction and/or competes with the rejected sail number may be scored DNC without a hearing. This changes RRS 63.1 and RRS A5.

#### **6. RACING AREA**

The intended racing area will be waters on the northeast side of Guemes Island.

#### **7. COURSES**

All courses are described in Attachment A. The course to be sailed will be designated by numerical pennant(s) and displayed on the RC signal vessel.

#### **8. MARKS**

See mark and course descriptions on insert to the Official Program Guide.

## 9. THE START

9.1 Classes may be started in any order, although in the first race each day, the classes will be started in the order listed in SI section 5 'CLASS FLAGS' above. One or more classes may not be participating, in which case their starting sequence will be skipped.

9.2 The starting line is between a staff or halyard displaying an orange flag on the race committee signal boat at the starboard end of the starting line and the course side of an inflatable buoy at the port end of the line.

9.3 [DP] Boats whose warning signal has not been made shall avoid the starting area during the starting sequence for other boats whose warning signal has been made.

## 10. CHANGE OF THE NEXT LEG OF THE COURSE

To change the next leg of the course, the RC will move the original mark (or the finishing line) to a new position.

## 11. THE FINISH

The finishing line is between a staff or halyard displaying a blue flag on an RC vessel at the port end of the finish line and the course side of a nearby inflatable buoy at the starboard end.

## 12. TIME LIMITS

The time limit for each class for the first boat to sail the course and finish is 90 minutes. For One Design fleets, boats failing to finish within 15 minutes after the first boat in their class sails the course and finishes will be scored DNF. For PHRF fleets the time limit is 60 minutes after the first boat in their class sails the course and finishes. This changes RRS35, A4 and A5.

## 13. HEARING REQUESTS

13.1 The protest time limit is 45 minutes after the RC signal vessel ties at the dock after each day of racing.

13.2 Hearing requests shall be created and submitted online at: [https://www.racingrulesofsailing.org/protests/new?event\\_id=2075](https://www.racingrulesofsailing.org/protests/new?event_id=2075) This changes RRS 61.3.

13.3 The hearing schedule and other notices will be posted on [https://www.racingrulesofsailing.org/event\\_menus/2075/event\\_menu](https://www.racingrulesofsailing.org/event_menus/2075/event_menu) within 10 minutes of the filing time limit.

13.4 Hearings will be held upstairs at the Anacortes Yacht Club. Check in for hearings/arbitration at the protest desk downstairs.

13.5 Arbitration meetings and hearings will begin 15 minutes after protest filing time limit. If all parties are present and ready, they may begin earlier.

13.6 Protests will be heard by a properly constituted international jury per RRS Appendix N and right to appeal is denied per RRS 70.5.

13.7 Scoring inquiries will be available at the protest desk and must be submitted no later than 30 minutes after scores are posted on the official notice board and online at:

[https://yachtscoring.com/event\\_results\\_cumulative.cfm?eid=14265](https://yachtscoring.com/event_results_cumulative.cfm?eid=14265)

(a) The RC will review each scoring inquiry and inform the boat that submits a scoring inquiry of their findings and resulting actions if any.

(b). The boat may then request redress based on its claims in her original scoring inquiry.

(1). The boat must request a hearing within 15 minutes of the decision being delivered to it.

(2). The original scoring inquiry will be considered a request for redress for satisfying the requirements of RRS 62.

## 14. JUDGE ACTIONS ON THE WATER

Members of the jury may be on or near the racing area observing racing. A vessel that has a member of the Jury on board will display a code flag 'J.'

14.1 Protests by a boat:

(a) A boat may protest another boat by acting in accordance with RRS 61.1. A judge may respond by one of the following:

(1) No signal and remains silent. The judge did not see the incident. The protesting boat may deliver a protest in accordance with RRS 61.

(2) The display of a green flag with a sound signal means "No penalty." The protesting boat shall remove her red flag.

(3) The display of a red flag with a sound signal and identifying a boat by hailing means the identified boat shall take a penalty in accordance with NOR 9.1. If the boat does not take the penalty, she shall be scored DSQ without a protest hearing. This changes RRS 63.1. The protesting boat shall remove her red flag.

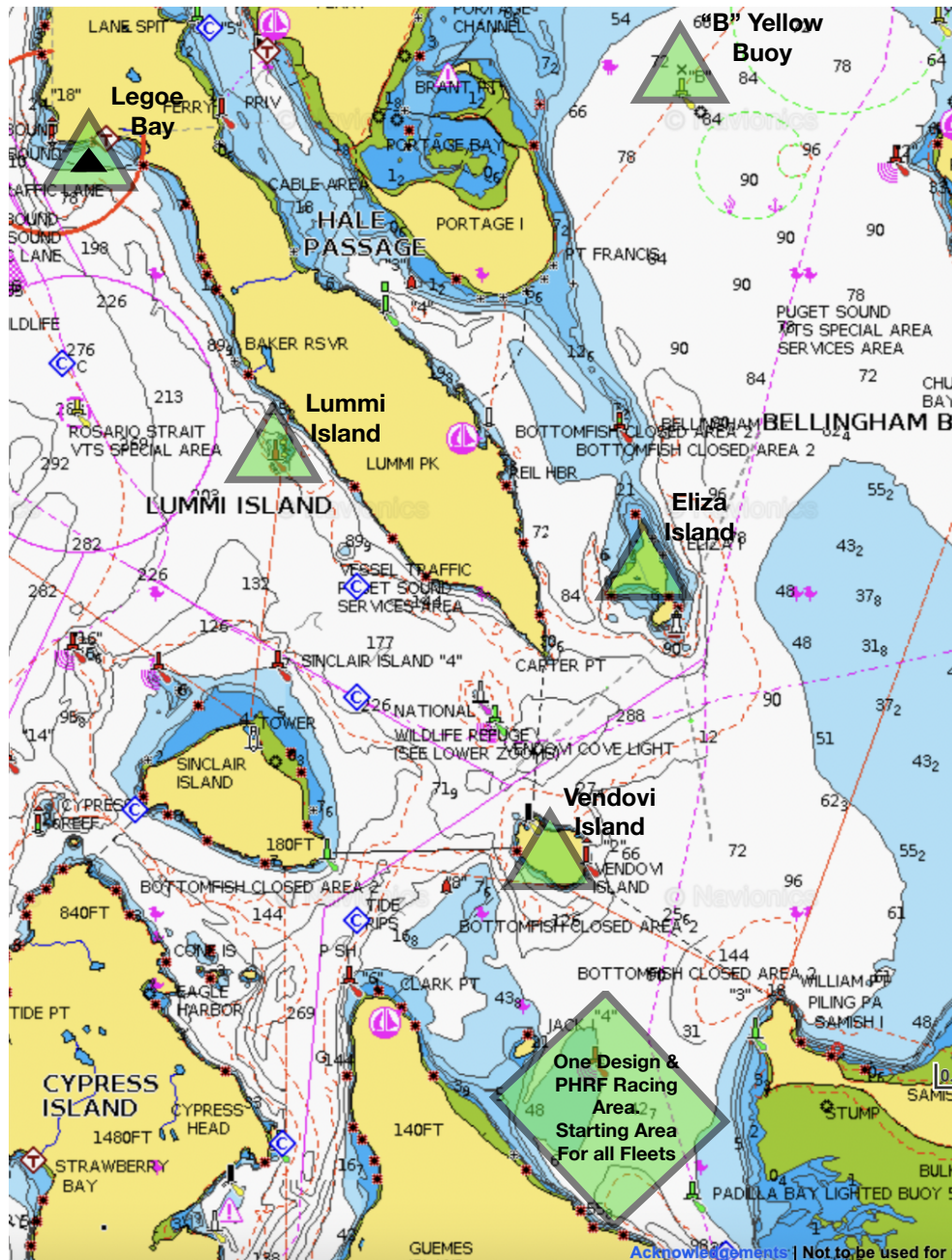
(b) When a judge decides that a boat has broken RRS 31 and she is not exonerated, the judge will make one sound signal, display a red flag and identify the boat by hailing. The identified boat shall take a penalty by complying with NOR 9.1. If the boat does not take a penalty, she shall be scored DSQ without a protest hearing. This changes RRS 63.1.

(c) Any non-action by a judge under SIs 14.1(a) or

(b) shall not be grounds for a request for redress. Jury boats may be positioned anywhere in the course area and this positioning shall not be grounds for a request for redress. This changes RRS 62.1(a).

## 15. RISK STATEMENT

The responsibility for a boat's decision to participate in a race or to continue to race is hers alone. By participating in this event, each competitor agrees and acknowledges that sailing is a potentially dangerous activity with inherent risks. These risks include strong winds and rough seas, sudden changes in weather, failure of equipment, boat handling errors, poor seamanship by other boats, loss of balance on an unstable platform and fatigue resulting in increased risk of injury. Inherent in the sport of sailing is the risk of permanent, catastrophic injury or death by drowning, trauma, hypothermia, or other causes.



Courses will be displayed by numerical pennant no later than each fleet's warning signal. Course designation will be lowered at end of each fleet's preparatory period.

**Course# Marks (All marks taken to PORT)**

- 1 Start - W - L2 - Finish
- 2 Start - W - L1 - W - L2 - Finish
- 3 Start - W - R1 - L1 - W - L2 - Finish
- 4 Start - W - R2 - L2 - Finish
- 5 Start - W - R2 - L2 - W - L2 - Finish
- 6 Start - Jack - L2 - Finish
- 7 Start - Vendovi - L2 - Finish
- 8 Start - Vendovi - Jack - Vendovi - L2 - Finish
- 9 Start - Legoe Bay - L2 - Finish
- 10 Start - Lummi - L2 - Finish
- 12 Start - Eliza - L2 - Finish
- 13 Start - Eliza - L1 - Eliza - L2 - Finish
- 14 Start - "B" - L2 - Finish

**Description of Marks**

- |                |  |
|----------------|--|
| Legoe Bay      | Inflatable mark, approx 48 42.794N 122 42.832W                           |
| Lummi Rocks    | Fixed mark (Fl R 6S), approx 48 40.171N 122 40.133W                      |
| "B"            | Fixed Yellow buoy, Bellingham Bay, approx 48 43.434N 122 34.597W         |
| Eliza Island   | approx 48 39.172N 122 35.045N  |
| Vendovi Island | approx 48 36.621N 122 36.374W  |
| Jack Island    | approx 48 34.884N 122 36.747W  |
| W              | Inflatable mark (color Red)  |
| R1             | Inflatable mark (color Red)  |
| R2             | Inflatable mark (color Red)  |
| L1             | Inflatable mark (color Yellow)   |
| L2             | Inflatable mark (color Red)  |
| Start 1        | Inflatable mark (color Yellow), designating PORT end of starting line    |
| Finish         | Inflatable mark (color Yellow), designating STARBOARD end of finish line |

Course Diagram (NOT TO SCALE)

